

TNA Antenna Kits Datasheet

Outdoor 60 GHz PTP & PTMP Antenna Kits for Select Models

Learn more at www.tachyon-networks.com

Applications

Extended Range Connections

Tachyon Networks offers a range of highly directional antenna kits that can be used in a Point to Point (PTP) setup or as a client in a Point to Multipoint (PTMP) setup. When paired with a compatible TNA radio, this combination creates a very focused connection that is highly resilient to interference and greatly increases distances.

Wide Scanning Options

The Tachyon Networks “S” series line of antenna kits are first of its kind (Patent Pending) that preserve the azimuth scanning of the attached, compatible TNA radio while greatly increasing the antenna gain. While elevation scanning is reduced, this combination is perfect where elevation changes are not severe and results in longer, more robust connections.

COMPATIBILITY	TNA-303X	TNA-301	TNA-302
TNA-AK-100	YES	NO	NO
TNA-AK-150	YES	NO	NO
TNA-AK-300	YES	NO	NO
TNA-AK-S-45	YES	NO	NO
TNA-AK-S-90	YES	NO	NO

Key Features

Modular Design

The Tachyon Networks antenna kits can be paired with compatible TNA radios in a modular fashion - allowing the installer to choose the antenna with the right gain, scanning, and physical properties for each installation. Attaching the antenna kit is a breeze and is quick and easy, greatly speeding up installation time.

Wide Range of Options

Tachyon Networks antenna kits are available in a wide array of different sizes, antenna gains, and beam steering features - enabling diverse networks to be built with exactly the right specifications. With some antenna kits supporting wide scanning and other providing highly focused beams, the right antenna kit may be selected easily.

MODEL	SCANNING RANGE	ANTENNA GAIN
TNA-AK-100	6° x 6°	33dBi
TNA-AK-150	4° x 4°	37dBi
TNA-AK-300	2° x 2°	42dBi
TNA-AK-S-45	45° x 5°	30dBi
TNA-AK-S-90	90° x 5°	30dBi

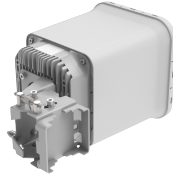
ANTENNA KITS

TNA-AK-100



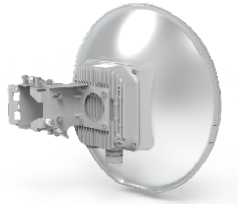
Antenna Gain	33dBi
Beam Steering	6° x 6°
Dimensions (approximate)	5inx5inx5in (13cmx13cmx13cm)
Mounting Bracket	L-style bracket included

TNA-AK-150



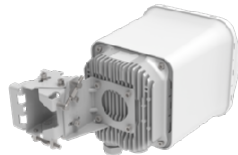
Antenna Gain	37dBi
Beam Steering	4° x 4°
Dimensions (approximate)	7inx6inx6in (18cmx15cmx15cm)
Mounting Bracket	Not included (TNA-M-P recommended)

TNA-AK-300



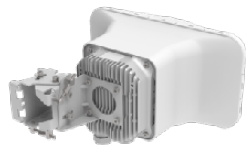
Antenna Gain	42dBi
Beam Steering	2° x 2°
Dimensions (approximate)	12inx12inx3in (30cmx30cmx8cm)
Mounting Bracket	Not included (TNA-M-P recommended)

TNA-AK-S-45



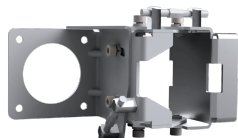
Antenna Gain	30dBi
Beam Steering	45° x 5°
Dimensions (approximate)	7inx6inx6in (18cmx15cmx15cm)
Mounting Bracket	Not included (TNA-M-P recommended)

TNA-AK-S-90



Antenna Gain	30dBi
Beam Steering	90° x 5°
Dimensions (approximate)	7inx12inx6in (18cmx30cmx15cm)
Mounting Bracket	Not included (TNA-M-P recommended)

TNA-M-P



Dimensions (approximate)	6inx4inx4in (15cmx10cmx10cm)
Max Pole Diameter	50mm/2in with included clamp; unlimited with hose clamp (not incl.)
Elevation Adjustment	+/- 15°
Azimuth Adjustment	+/- 15°