



Package Contents

- Wireless-G Notebook Adapter
- Setup Wizard CD-ROM
- User Guide on CD-ROM
- Quick Installation

2.4GHz Wireless-N Notebook Adapter

Quick Installation

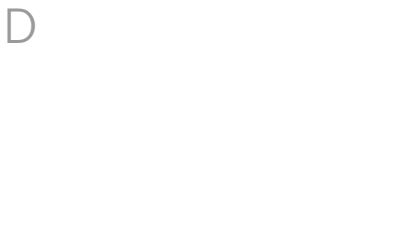


1 Begin Installation

IMPORTANT: Do not install the Adapter in your PC until you are instructed to do so in Step 2 or the Adapter will not install correctly.

- A** The Notebook Adapter is installed and set up using the Setup Wizard that comes on the enclosed CD.
- B** To begin, insert the **Setup Wizard CD-ROM** into your CD-ROM drive. The Setup Wizard should run automatically, and the *Welcome* screen should appear.
- C** To install the Adapter, click **Click Here to Start** on the *Welcome* screen.
- D** After reading the License Agreement, click **Next** to continue the installation and Windows will begin copying the files onto your PC.
- E** Windows will begin copying the files onto your PC.
- F** The Setup Wizard will now prompt you to install the Adapter into your PC.

Proceed to Step 2.

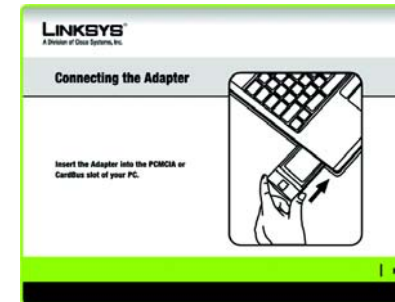


2 Connect the Adapter

Go to the section for your Windows operating system.

Windows XP

- A** When the Software Installation screen appears, click **Continue Anyway**.
- B** Locate an available Card-Bus slot on your notebook PC.
- C** With the connector pin end facing the CardBus slot and the label facing up, slide the Adapter into the Card-Bus slot until it locks in place. Then, click **Next**.
- D** If you have Windows XP with Service Pack 2, the Welcome to the Found New Hardware Wizard screen appears, click **Next**.



Connecting the Adapter



- E** When the Found New Hardware screen appears, make sure that *Install the Software Automatically (Recommended)* is selected, then click **Next**.

- F** When this screen appears, click **Continue Anyway**.

- G** Windows will begin copying the driver files to your computer.

- H** When the Wizard has finished installing the software, click **Finish**.

Proceed to Step 3.



3 Set up the Adapter

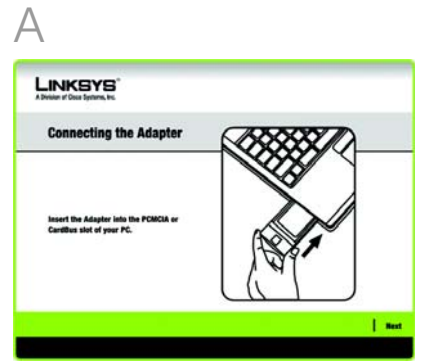
Windows 2000

A When this screen appears, click **Yes**.



B Locate an available Card-Bus slot on your notebook PC.

C With the connector pin end facing the CardBus slot and the label facing up, slide the Adapter into the Card-Bus slot until it locks in place.



Connecting the Adapter

D When this screen appears, click **Yes**.

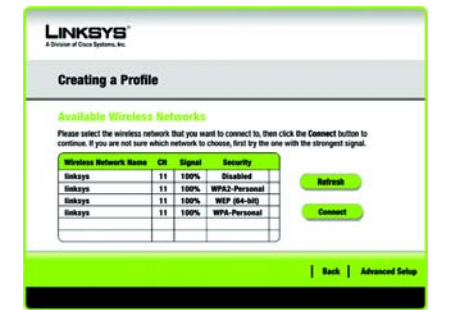


Proceed to Step 3.

The next screen to appear will be the Available Wireless Networks screen. From this screen, you can launch one of the two setup methods.

Important: For Quick Installation, use this document only if your network appears on the Available Wireless Networks screen.

Manual Setup: If you are using Manual Setup, click the **Advanced Setup** button and follow the on screen prompts.



Available Wireless Network

Setting Up the Adapter with Available Networks

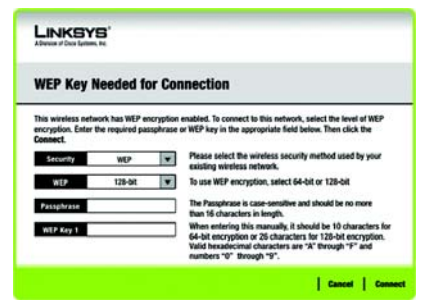
On the *Available Wireless Networks* screen, the available networks are listed in the center table by Available Wireless Networks. Select the wireless network you wish to connect to and click the **Connect** button. (If you do not see your network listed, you can click the **Refresh** button.)

If the network uses wireless security, you will need to configure security on the Adapter. If not, you will be taken directly to the *Congratulations* screen, shown in Step B.

A If wireless security is enabled on this network, you will see one of these wireless security screens.

WEP Key Needed for Connection

Select **64-bit** or **128-bit**. Then, enter a passphrase or WEP key.



WEP Key Needed

NOTE: Your passphrase must match the passphrase of your other wireless network devices and is compatible with Linksys wireless products only. (Non-Linksys wireless products, require a WEP key to be entered.)

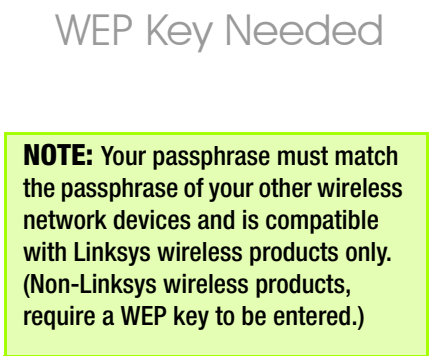
Passphrase - The passphrase must match the passphrase of your wireless network. This is case-sensitive and should not be longer than 16 alphanumeric characters.

WEP Key - The WEP key must match the WEP key of your wireless network. For 64-bit encryption, enter exactly 10 hexadecimal characters. For 128-bit encryption, enter exactly 26 hexadecimal characters. Valid hexadecimal characters are "0" to "9" and "A" to "F".

Click **Connect** and go to Step B.

PSK Needed for Connection

Select **TKIP** or **AES** for the Encryption type, then enter a Pre-shared Key.



PSK Needed

Encryption - The encryption must match the encryption of your wireless network

Pre-shared Key - The Pre-shared Key must match the Pre-shared Key of your wire-

less network and must be 8-63 characters.

Click **Connect** and go to Step B.

PSK2 Needed for Connection

Enter a Pre-shared Key. The Pre-shared Key must match the Pre-shared Key of your wireless network and must be 8-63 characters.

Click **Connect** and go to Step B.

B After the Adapter is configured for the network, the *Congratulations* screen will appear. Click **Finish** to complete the setup.

Congratulations! Setup is complete.

NOTE: After the Adapter is installed, the *Wireless Network Monitor* screen will open and its icon will appear in your PC's system tray. Double-click the icon if you want to open the Monitor to find available wireless networks or for configuration changes.



PSK2 Needed



LINKSYS

A Division of Cisco Systems, Inc.

For additional information or troubleshooting help, refer to the User Guide on the Setup CD-ROM. You can also call or email for further support.

24-hour Technical Support
800-859-2379
(toll-free from US or Canada)

E-mail Support
support@linksys.com

Website
http://www.linksys.com or
http://support.linksys.com

RMA (Return Merchandise Authorization)
http://www.linksys.com/support

FTP Site
ftp://ftp.linksys.com

Sales Information
800-546-5797 (800-LINKSYS)

Linksys is a registered trademark or trademark of Cisco Systems, Inc. and/or its affiliates in the U.S. and certain other countries. Copyright © 2006 Cisco Systems, Inc. All rights reserved.

WPC300N-QI-60330NC BW